



M&M ENGINEERING

Where Accuracy
and Quality Meets.

CONTENTS:



1. About M&M

2. Mission

3. Vision

4. ISO

5. Fabrication Expertise in

6. Organization Chart

7. Equipment's & Machineries

8. Plant & Infrastructure

9. Manufacturing Process Flow

10. Materials that we weld

11. Manpower List

12. In-House Fabricated Items

13. Fabricated Items - Potential Knowhow

14. Major Customers

ABOUT M&M:



*Established in 2022, **M&M Engineering** is a contemporary name in the field of Fabrication & Engineering, located in Vadodara. With our new & fresh ideology, our primary focus is to build everlasting relations with our customers, employees, suppliers and the community by providing high-quality fabrication work using best technology and equipment.*

Our team has highly dedicated, well-trained, knowledgeable and skilled members who take care of each aspect minutely. We undergo an intricate process and well structured methods for every new project since its beginning. We implement best practices to ensure cost and time is optimized to a satisfactory level while execution of job. Our company strives for continual improvement in the operational systems to achieve greater coherence. We believe in delivering projects on time with our best efforts, as we value and respect our customers demand and their precious time.

Our state of art methods ensure high accuracy results having a perfect specification as expected.

MISSION:



Our Mission is to provide superior quality materials and extraordinary services at fair and market-competitive prices by emphasizing on quality, integrated systems and assurance of reliability.

M&M Engineering shall achieve sustainable business growth by value creation for all stakeholders through continuous innovation and improvement in operations, capabilities, products and services while remaining agile and adaptable.

M&M Engineering shall follow fair, transparent and ethical practices and encourage a culture of care, safe and healthy work environment. Our focus shall be people empowerment as well as protection of environment and natural resources.

VISION:



Our Vision is to achieve sustained growth by proactively seeking new opportunities to develop, improve and raise the standard of our services, thereby, contributing to the growth of the nation and shall be an, important player in select Indian and International markets.

ISO:



ISO 9001 : 2015



Certification of Registration
QUALITY MANAGEMENT SYSTEM

M & M ENGINEERING

Office:

269/6, Kadam Nagar, Nizampura, Vadodra - 390002, Gujarat, India.

Site:

Plot No.24/1, POR G.I.D.C., Ramangamdi, Vadodra - 391243, Gujarat, India

Hereby granted the Certificate Number EC1498/2023:0323

Subsequent to the assessment conducted on 05 MARCH 2023 and the organization found operating a Quality Management System which complies with the requirements of ISO 9001: 2015

Design, Manufacturing, Installation, Commissioning and Services
of Heavy Engineering Components & Equipments, Pressure
Vessels, Piping Spools and Pre-Engineering Buildings

Surveillance 1: On or Before 16 MAR. 2024

Surveillance 2: On or Before 16 MAR. 2025

Originally Registered: 16 MAR. 2023 Latest issue: 16 MAR. 2023 Expiry Date: 15 MAR. 2026

For, EURO CERT

Chief Executive Officer

- This certificate is valid for 3 years. (In case of surveillance Audit is not allowed to be conducted, is Certificate shall be Suspended/Withdrawal).
- Please Re-validate this certificate's status at <http://www.eurocertindia.com>
- The certificate of Registration is granted subject to relevant provisions of the EUROCERT Contract Terms & Scheme for Registration Form B02B(Latest Version).
- The certificate of Registration remains the property of EUROCERT and shall be returned immediately upon request.
- Issuing Office - Unit-1, Level-2, B Wing, "Times Square", Andheri - Kurla Road, Andheri (East), Mumbai-400059, (INDIA)

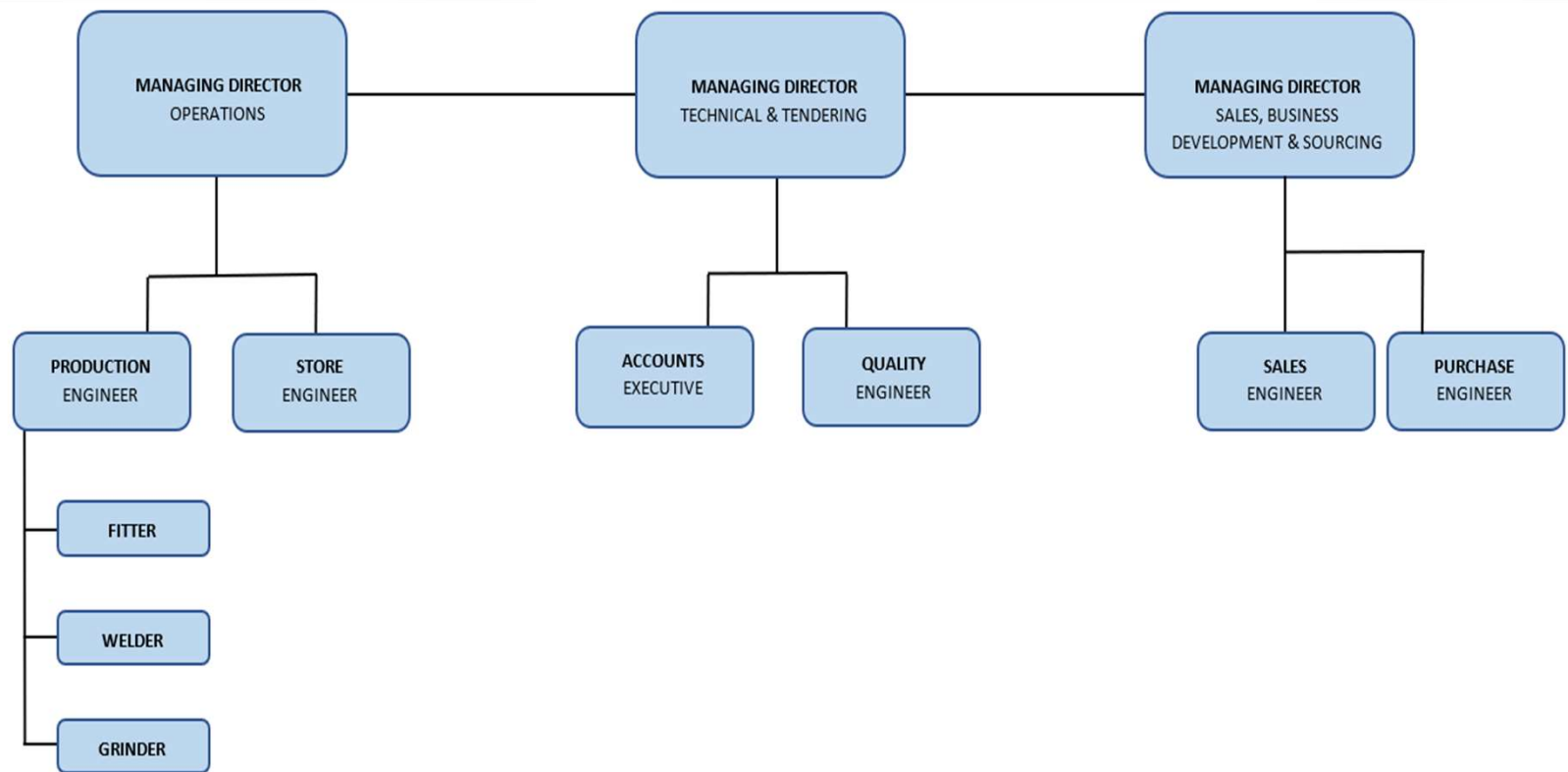


FABRICATION EXPERTISE IN:



- ✓ ***Heavy Fabrication***
- ✓ ***Piping Spools***
- ✓ ***Tanks & Pressure Vessels***
- ✓ ***Process Equipment's***
- ✓ ***Pre Engineered Buildings***

ORGANISATION CHART:



Additional Need Based Resources:

- 1) Manpower for Labor Activities
- 2) Carpenters
- 3) Material Handling - Transport Vehicles, Crane, Hydra

EQUIPMENTS & MACHINERIES:

Equipment	Quantity	Specification	Equipment	Quantity	Specification
Welding Machine	25 Nos.	400 A DC.	Vernier Calliper	1 Nos.	6", 12", 24" (Mitutoyo)
Welding Rectifier	15 Nos.	600 A DC.		1 Nos.	12" (Digital), 12" (Dial)
PUG Cutting Machine	5 Nos.		Dial Gauge	1 Nos.	Digital 2 no's (Mitutoyo)
Hand Cutting Set (GAS)	5 Nos.			1 Nos.	Digital 50mm
Drilling Machine (Magnatic Portable)	3 Nos.		Micro Meter	2 Nos.	0 to 300mm (Mitutoyo)
Grinding Machine	25 Nos.	AG 7		2 Nos.	300mm to 600mm
			Measure Tape	4 Nos.	Digital Tape 5m (Mitutoyo)
				4 Nos.	15m, 5m and 3m.

New Additions:

- | | |
|---|---------|
| 1) Electrode / Flux Baking Oven | : 1 No. |
| 2) Portable Electrode Baking Oven | : 3 No. |
| 3) Pressure Pump for Hydro Test (10 PSI) | : 1 No. |
| 4) Air Compressor (7.5 Kg/cm ²) | : 1 No. |

PLANT & INFRASTRUCTURE:

Shop Area: 11,000 sq ft

Shop Height: 10 meters

Electricity: 50 HP

Crane Capacity: 10 MT

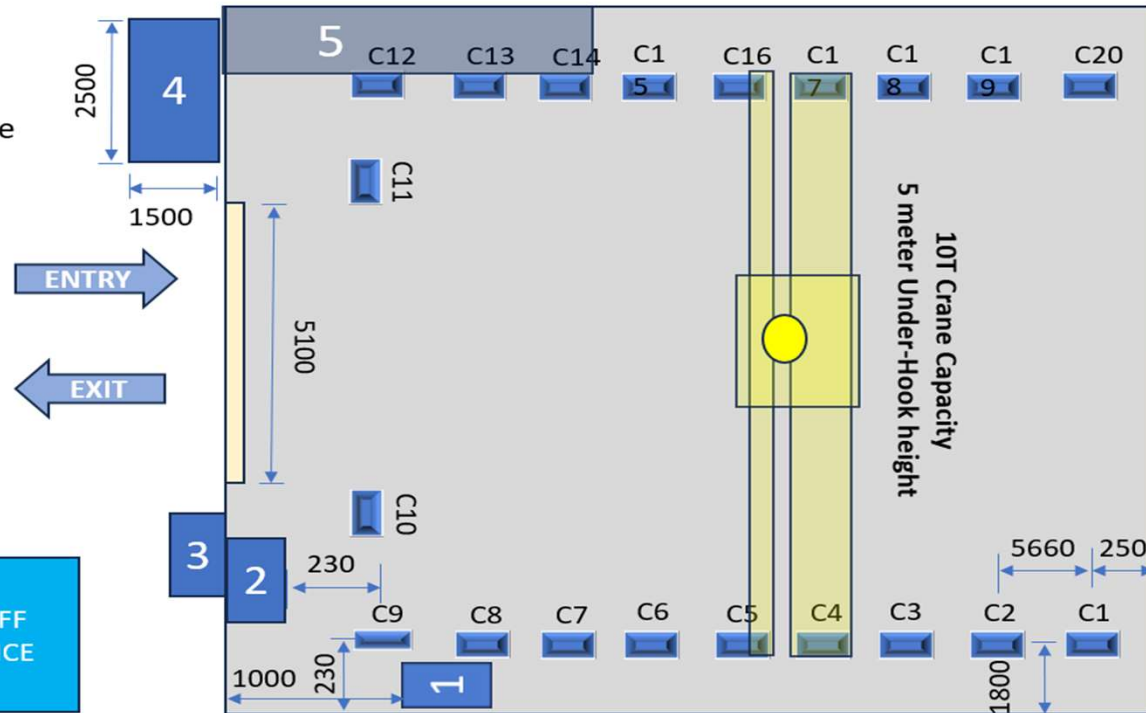
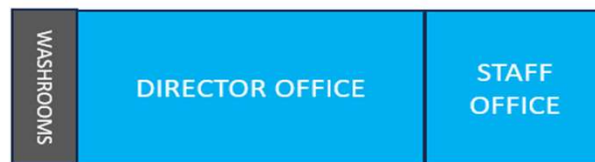
M&M Engineering - Plant Layout

Covered Area : 11,000 sq ft
Open Area : 5,000 sq ft

COLUMN MOUNTINGS:

- C-2 1 Fan
- C-3 1 Panel Board
- 4-16 Amp
- 3-32 Amp
- 1-63 Amp
- 2-200W Light
- C-4 1 Camera
1 Fan
1-200W light
- C-5 1 Camera
1 Panel Board
- 4-16 Amp
- 3-32 Amp
- 2-200W Light
- 1 Switch
- C-8 1 Fan
1 Camera
1 Panel Board
- 4-16 Amp
- 3-32 Amp
- 1-63 Amp
- 1 Switch
- C-13 1 Fan
1 200 W Light
1 200 W Light
- C-15 1 Fan
- C-16 1 Camera
1 200 W Light
- C-17 1 Panel Board
3-32 Amp
4-16 Amp

- 1 – Main Panel
- 2 – Distribution Panel
- 3 – Electricity Meter
- 4 – Cylinder Storage Area
- 5 – Consumables Store



MANUFACTURING PROCESS FLOW:



Shop Area: 11,000 sq ft

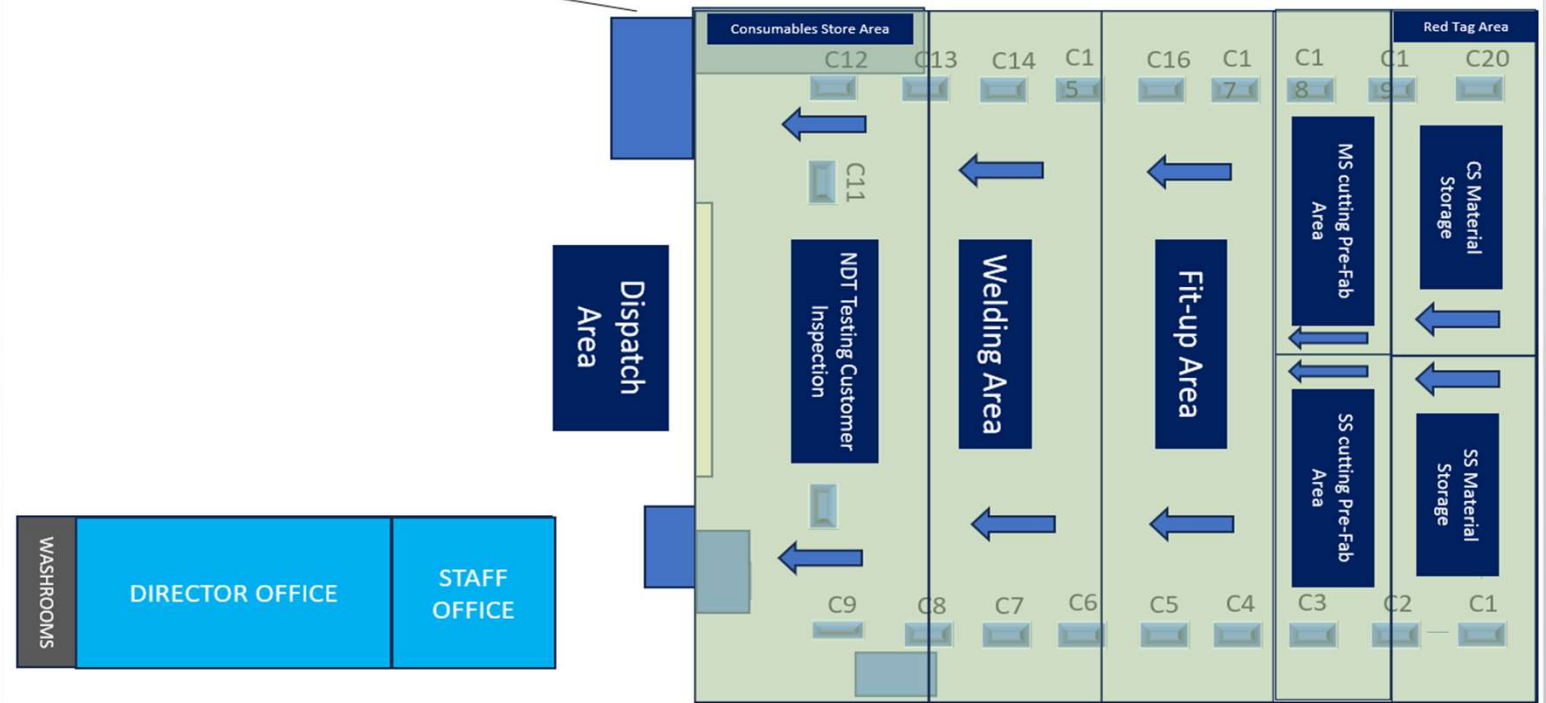
Shop Height: 10 meters

Electricity: 50 HP

Crane Capacity: 10 MT

M&M Engineering – Process Flow

Covered Area : 11,000 sq ft
Open Area : 5,000 sq ft



MATERIALS THAT WE WELD:

- *Carbon Steels*
- *Duplex, Super Duplex & Hyper Duplex Stainless Steel*
- *Aluminum & Aluminum Alloys*
- *Austenitic Stainless Steels*
- *Nickel based Alloys (Inconel, Incoloy, Hastelloy, Monel)*
- *Quenched and Tempered Steel*
- *Low Alloy Steels Inc, Cr, Mo, V*
- *Copper Based Alloys (Cupro-nickel, Aluminum Bronze, Brass)*
- *Clad Steels with Stainless Steel, Inconel, Monel, Cupro-Nickel, Titanium etc.*

WELDING PROCESS:

SMAW

GMAW

GTAW

SAW

FCAW

MANPOWER LIST:

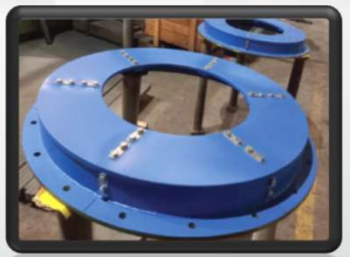


Fitter	: 10 Nos.
Welder	: 30 Nos.
Grinder	: 30 Nos.
Gas Cutter	: 04 Nos.
Helpers	: 12 Nos.
House Keeping	: 02 Nos.

IN-HOUSE FABRICATED ITEMS:



FABRICATED ITEMS – POTENTIAL KNOWHOW:



MAJOR CUSTOMERS:



THANK YOU!

Looking Forward....

Questions Welcome.....

